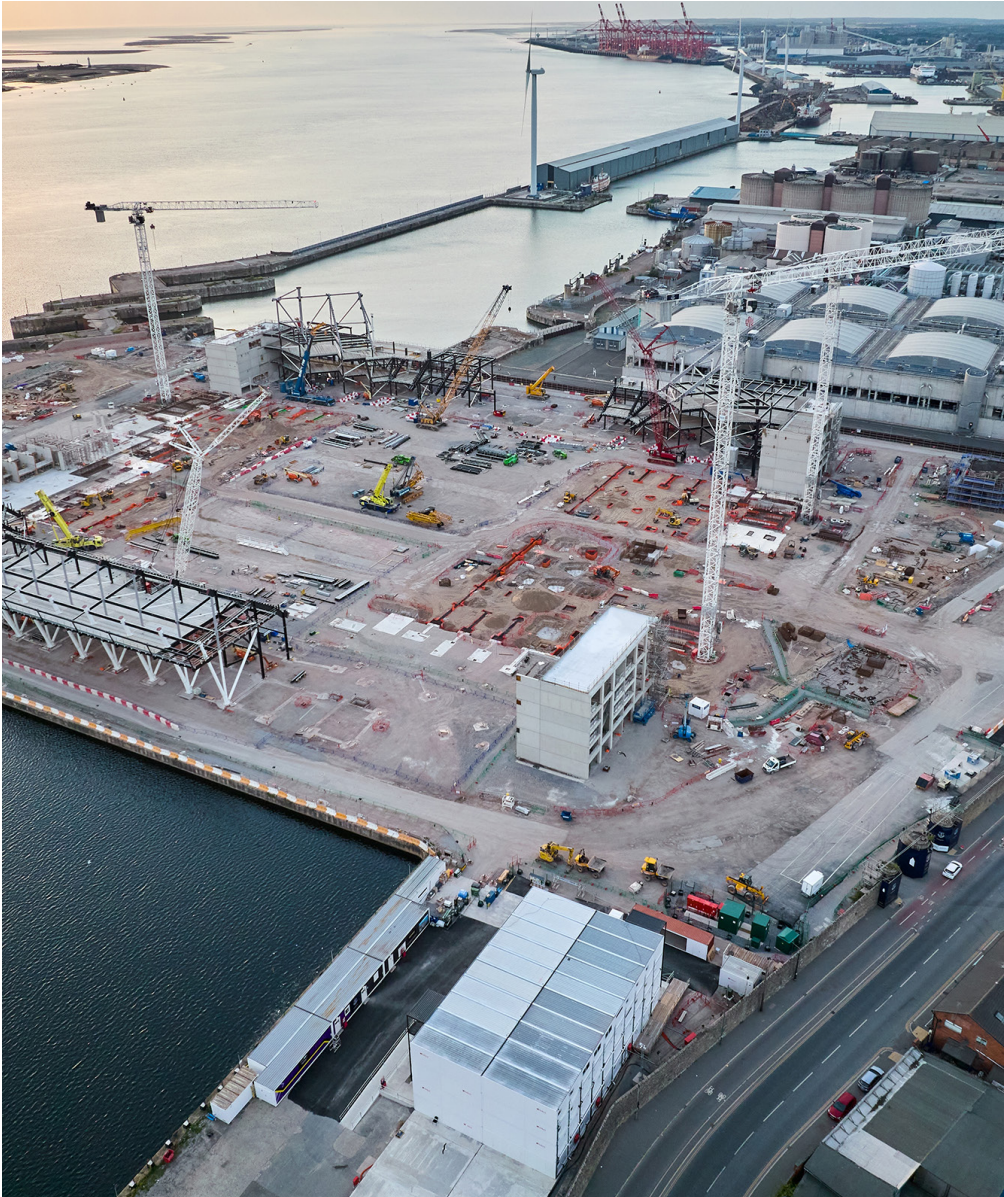


PTSG at Everton F.C.'s new stadium



PTSG at Everton F.C's new stadium



Premier Technical Services Group Ltd (PTSG) has been asked to deliver a range of access and safety equipment and systems at Everton F.C's brand-new £500m stadium.

The new stadium at Bramley-Moore Dock will become the home ground for Everton F.C. The Toffees confirmed their £500million stadium plans back in July 2021 as they prepare to wave goodbye to Goodison Park, their home of the last 130 years. Building started on the site at Bramley-Moore dock the following month, with club officials outlining their aim for the stadium to be ready in time for the start of the 2024-25 campaign.

The Toffees confirmed their £500million stadium plans back in July 2021 as they prepare to wave goodbye to Goodison Park, their home of the last 130 years.

Bramley-Moore is a former commercial dock that sits behind locked gates next to a wastewater treatment plant, and it is intended that the new stadium will become the heart of a new mixed-use development in the area containing shops, housing and other venues.

PTSG Access & Safety Ltd will be providing safe access to the lower flat roofs by providing almost 1km of aluminium free-standing guardrail to the perimeters for general maintenance access, with the added protection of Latchways ManSafe beyond the line of the guardrail to provide safe access to areas beyond the safe protection of the guardrail. PTSG's work commences in March and the contract will run through to the summer of 2023.

PTSG's other work at sports stadia

PTSG's other divisions, including PTSG Electrical Services Ltd and PTSG Building Access Specialists Ltd, have delivered specialist services at sports stadia across the UK for some leading football clubs.

Celtic Football Club

Celtic Park is the home stadium of Celtic F.C, also known as Glasgow Celtic. It is the largest football stadium in Scotland and the eighth-largest stadium in the United Kingdom.

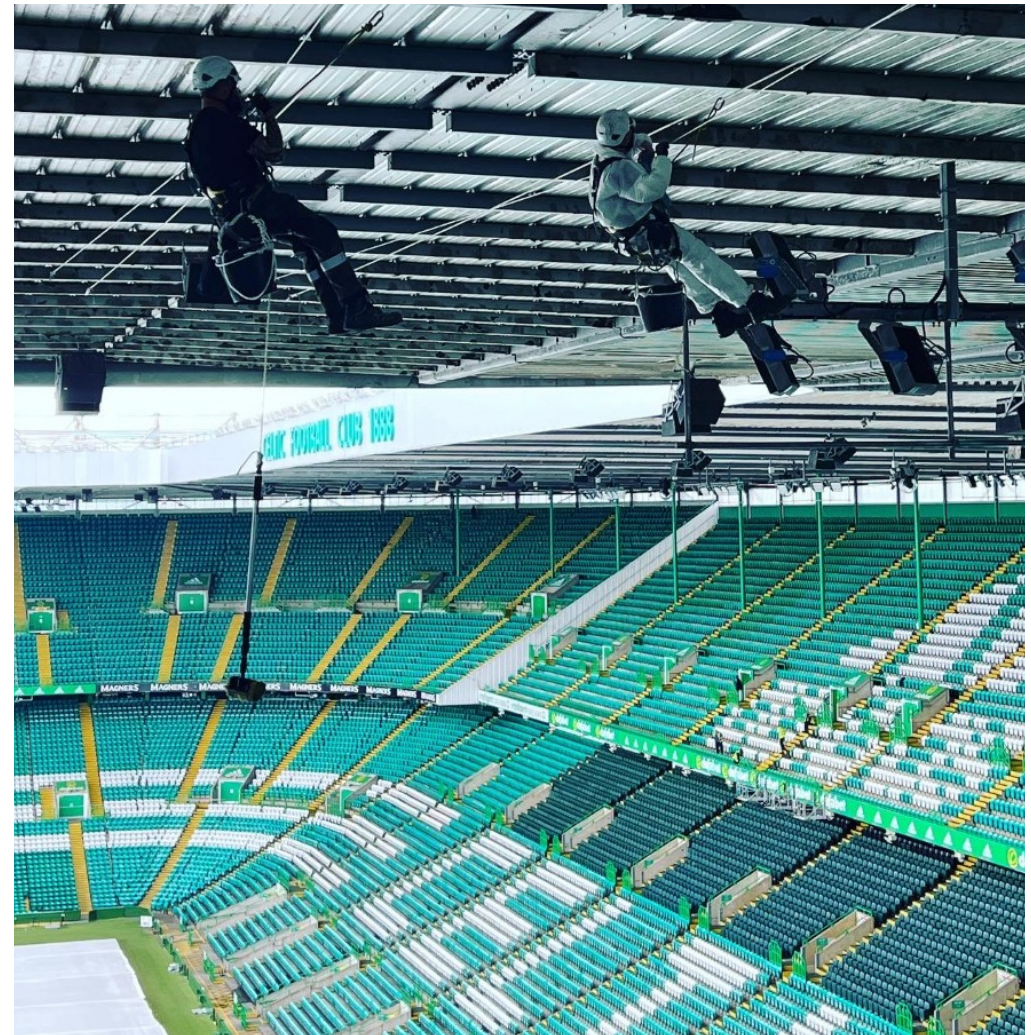
Following on from a successful 2021 project on the West Stand at Celtic Park, PTSG Building Access Specialists Ltd returned during the off-season break (before the start of the 2022/23 season) to carry out the structural inspections and painting of the steel support purlins to the underside of the East stand. Using the company's bespoke lateral access system, its engineers carried out the works within the timescale of the closed season to the delight of the club.

Hamilton Academical F.C.

Hamilton Academical Football Club – also known as The Accies – compete in the Scottish Championship. They currently play their games at New Douglas Park, which has capacity for more than 6,000 people.

In July 2021, engineers from PTSG Electrical Services Ltd were asked to test and inspect lightning protection systems at the club's premises. These systems protect buildings and keep visitors and staff safe during electrical storms.

Lightning protection systems need to be tested and inspected regularly – ideally just less than every twelve months – to check the equipment in different seasonal conditions. Tests and inspections ensure compliance with the Electricity at Work Act 1989, BS 6651 and BS EN 62305.



Hearts

During the off-season break in 2021, PTSG Building Access Specialists Ltd worked in partnership with Heart of Midlothian Football Club (HMFC) to paint the structural roof support trusses in place at the stadium.

This presented the opportunity to allow cherry pickers onto the pitch to safely undertake the re-painting of the stadium's high-level roof trusses with a 25-year life paint specification

During the close-season, HMFC knew it was necessary to refurbish its playing surface. This presented the opportunity to allow cherry pickers onto the pitch to safely undertake the re-painting of the stadium's high-level roof trusses with a 25-year life paint specification. At the same time, the club also took the opportunity to replace its existing floodlights, which were at the end of their life expectancy, being nearly 30 years old.

The six-week programme was concluded within both time scale and budget.

